

OTB Instructions:

1. Extract "OTB.rar" to a folder.
2. Connect the USB cable to the direct USB port located at the rear of your PC for desktops. Connect the USB cable to any notebook USB ports.
We do not recommend the use of external USB hubs or, for desktops, case USB ports.
3. Turn on the HD-380/HD-381 enclosure with hard drive installed.
4. Open application "StorageButtonManager-12.exe" from OTB folder.
 - Button manager setup box will open
 - OTB windows startup will be created
5. Click on the "Select" button from the "Copy From: Select" pop-up to designate source path for backup.

Copy From:

6. Click on the "Select" button from the "Copy To: Select" pop-up to designate destination path for backup.

Copy To:

7. Click on OTB button on the enclosure to start the backup.



8. Timer icon indicates that backup has started.



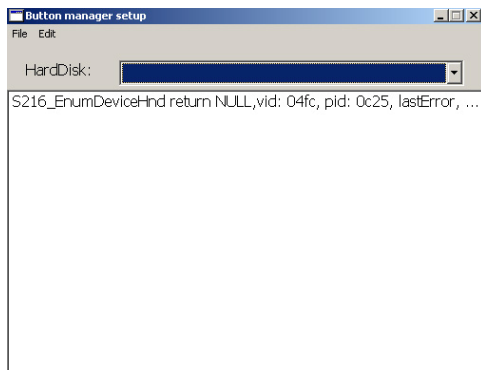
9. Backup is completed when "Latest Message: Backup finished with no error" pops up.

Latest Message: Backup finished with no error

At: 2008-07-21, 1:54 PM

10. To restore, repeat steps 5 – 9
 - Select "Copy From:" source of your backup
 - Select "Copy To:" destination to restore backup files

Note: This OTB Error may occur if the OTB cannot communicate with your hard drive.



Please make sure your hard drive is connected properly – partitioned as primary and NTFS formatted. FAT32 is not supported.