



## 2.5" HDD EXTERNAL ENCLOSURE

User Manual

### TABLE OF CONTENTS

<b>01</b>	Xtreme Files
	External Enclosure
	User's Manual Notice
<b>02</b>	User Agreement
<b>03</b>	Preface
<b>04</b>	Product Feature
<b>05</b>	System Requirement
<b>06</b>	Function
<b>07</b>	Hard Drive Installation
<b>08</b>	Software Installation
<b>10</b>	Usage
<b>12</b>	Drive Removal
	Notice
<b>13</b>	FAQ: Index Hard Drive
	Formatting

## **USER'S AGREEMENT**

- \* Any reverse engineering, de-compilation, disassembling of the software of the Xtreme Files is strictly prohibited.
- \* The bundled back up software is designed for use with only one computer. If the user installed this software on 2 computers, Coolmax does not guarantee the reliability of the backup data when restored.
- \* The bundled backup software is designed to be used only with the hardware provided by Coolmax. The software cannot be used for any other purpose. In the attempt of doing so, Coolmax is not responsible for the results.
- \* The Xtreme Files is patented worldwide, and Coolmax is legally authorized to use all of the related technology included in the X-treme Files. Any unauthorized de-compilation, disassembling, replication and copying of the X-treme Files' hardware and software are construed as an illegal violation of Coolmax' intellectual property. Coolmax will reserve the right of pursuing legal action at the First Circuit Court.

**PREFACE**

The need to come up with a technologically advanced data backup system propelled Coolmax to develop a breakthrough product in backup solutions. Instinctively, Coolmax's innovative nature conceived the Xtreme Files™ External Enclosure for a quick and effortless backup and data management system with reliable results.

## PRODUCT FEATURE

1. **Easy Operation:** Single push-button operation to backup.
2. **Mobile Operation**
3. **Security:** Only backs up the data under the log-on user name.
4. **Flexible Use:** Options for "Total Backup" or "Selective Backup".
5. **Smart Exclusion List:** During the Total Backup, the following file types will not be backed up, .exe, com, .dll, .tmp files, as well as all of the files in the Windows System folder and Program Files folder to avoid changing the setting of computer's operating system.
6. **Path oriented selection for Selective Backup.** The user can choose a whole drive, partition, folder or single data file for selective backup.
7. **The file selection of the selective backup will be saved for the next time when the user would use the selective backup to save time.**
8. **The Desktop and My Briefcase is the default choice of the selective backup.**
9. **The backed up file would be restored to its original path on the computer.**

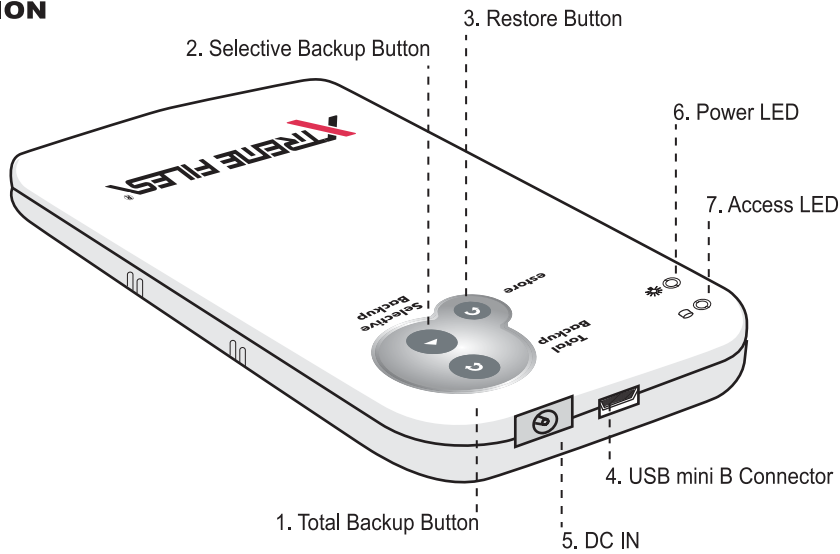
## SYSTEM REQUIREMENT

CPU	Pentium III, AMD K7 or better
Operating System	Windows 98SE/Me/2000/XP
Optical Drive	4X or above
RAM	64MB
Interface	USB 2.0, backwards compatible with USB 1.1

Items included with the External Enclosure:

1. 2.5" External Enclosure
2. Xtreme Files External Enclosure Software CD
3. Product Manual
4. Warranty Card
5. USB Cable
6. Power Adapter

**FUNCTION**

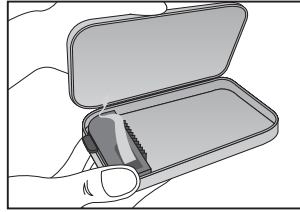
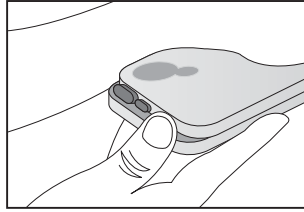
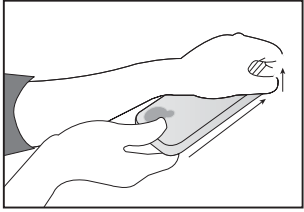


1. **Total Backup button:** Push this button to back up all the data in the Xtreme Files with the smart exclusion function.
2. **Selective Backup button:** Push this button to choose whole drive, partition, folder or single data file for backup.
3. **Restore Button:** Push this button, and all of the backed up data will show up for you to choose which drive, partition, folder or single data file to restore.
4. **USB 2.0 connector**
5. **DC IN plug**
6. **Power LED indicator**
7. **Access LED indicator**

## HARD DRIVE INSTALLATION

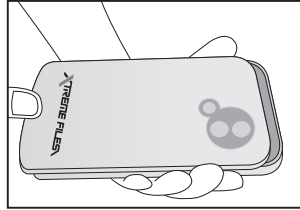
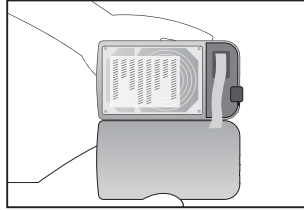
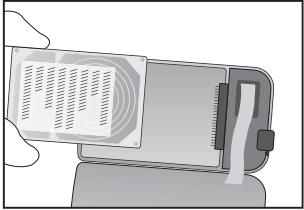
\*Please skip to the software installation if your X-treme Files came with a hard drive installed.

A. Lift up the front end of the top case and push the top case forward as shown in the pictures below. Open the top case slowly and carefully.



B. Make sure your HDD is set to master or cable select.

C. Insert your 2.5-inch hard drive carefully as shown below.



D. Match the hook on the top case and the indentations on the bottom case, then close the case. Once the case is closed, push the top case back into position. Please refer to the pictures above for reference.

## SOFTWARE INSTALLATION

\*Make sure you finish the hard drive installation.

\*If your OS is Windows 2000 or XP, please log onto the computer under the "administrator."

\*Connect the Xtreme Files to the computer (with hard drive installed), proceed to format the hard drive first then install the software. For details please go to the last page of the manual for formatting information.

a. Connect your Xtreme Files to your computer first. Then insert the bundled CD into your CD-ROM.

Enter the CD and left click twice on the SETUP .EXE.



b. Follow the on-screen instruction.




c. Read the licensing agreement and click on "Agree" and "Next." The software will install automatically.



d. After the software has been installed, the short cut will appear automatically. The software icon will also appear in the lower right corner of the screen as shown.





- e. When this software  icon is shown, which means the Xtreme Files is connected to the computer correctly.
- f. When this software icon is shown , this means the External Enclosure is NOT connected to the computer.
- g. After the software installation has been completed, click on  the short cut, or re-start the computer to begin using the External Enclosure.

**Windows ME**

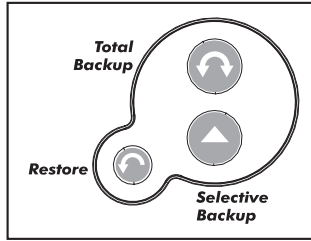
\*The following installations and instructions are only for Windows ME:

- a. Do not connect the Xtreme Files prior to finishing the software installation. After the software installation is finished, reboot the computer to start using the Xtreme Files. All of the installation steps are the same as above.
- b. If you receive an error message after rebooting, then just reboot the PC again.
- c. Remove the Xtreme Files before shutting the computer off. For the proper removal procedure, please refer to this manual.

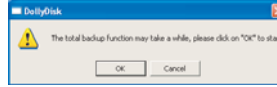
**USAGE**

a. **Buttons:**

There are three buttons located on the Xtreme Files.



b. Total Backup: When you push the "Total Backup" button, the system will ask you for confirmation. Click on "yes" to proceed.



The backup progress would be reported [as shown].

1. Under the "Total Backup" function, all of the data on your internal hard drives will be backed up. So it may take a while.



2. During the Total Backup the following file types will not be backed up, .exe, com, .dll, .tmp files and all of the files in the Windows system folder and Program Files folder to avoid changing the setting of computer's operating system.



**c. Selective Backup:**

After you push the "Selective Backup" button. The computer's drive-folder-file path selection window would appear. Just click on "Start" to proceed to the backup operation. Only the selected drive, folder, or file will be backed up. The next time you push the "Selective Backup" button, it will pre-choose the drive, folder, or file you selected last time.



**d. Restore:**

A selection window will automatically pop up when you push the "Restore" button. You can choose either "Selective Restore" or "Total Restore."



**Selective Restore:**

The computer's drive-folder-file path selection window would appear when you choose the "Selective Restore" function. All of the data you have ever backed up would appear on the Window according to the drive-folder-file path.



**Total Restore:**

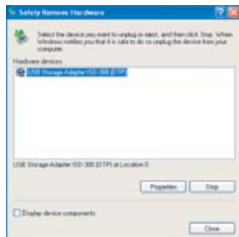
When you select the "Total Restore" function, the Xtreme Files will proceed to restore all of the data it has backed up before to its original path.

**Drive Removal**

- a. Please go to Xtreme Files software icon  on the lower right corner and right click on the icon to stop the software.



- b. Then right click on the green arrow on the lower right corner to remove the drive. Please select "stop" [as shown].



- c. After the computer has confirmed it is safe to remove the drive, just remove the cable.

**NOTICE**

- a. Visit [www.coolmaxusa.com](http://www.coolmaxusa.com) periodically for software updates.
- b. Do not move or disconnect the USB cable when the Xtreme Files is in operation, this may result in damaging your hard drive.
- c. The Xtreme Files only supports Microsoft Windows 98SE/ Me/2000/ XP.
- d. Do not remove any files in the "Backup" folder, you may erase your backed up files by accident.
- e. If your computer's USB port does not supply enough power, please contact us through [www.coolmaxusa.com](http://www.coolmaxusa.com) to buy our power adapter to ensure the proper function of the Xtreme Files
- F. If you use the Xtreme Files as a mobile hard drive, please be sure to follow the proper removal procedures described above.

## **FAQ: INDEX HARD DRIVE FORMATTING**

Q: Why can't I install the Xtreme Files software?

A: Here are several possibilities:

1. Make sure your hard drive is formatted.
2. If your hard drive cannot be recognized, your hard drive may need more power than your USB port can provide. Please a power supply from our website ([www.coolmaxusa.com](http://www.coolmaxusa.com))
3. If you connected the Xtreme Files to the USB hub, make sure your hub is self powered or connect the Xtreme Files to the USB port on the computer directly.
4. Make sure that you are using the USB cable provided.

**Q: The hard drive is recognized, but the buttons do not work?**

A: Please make sure you have installed the software that came with the product.

**Q: Can I switch to a larger capacity hard drive?**

A: Of course, just follow the hard drive and the software installation steps again.

**Q: Can I do data backup on two different computers?**

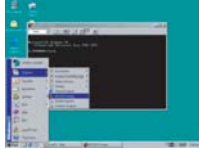
A: Yes, but the log on name must be different under Windows 2000/XP in order to avoid data **backup confusion** for the Xtreme Files.

Q: Is the Xtreme Files Mac compatible?

A: No, as of now, the software is for PC only.

## Under Windows 98/ME

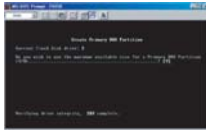
1. Please follow the path of "Start">"Program Files">"Accessories">"MS-DOS" and type in Fdisk



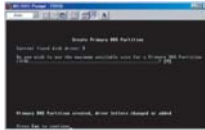
2. Press Enter twice. Then select the "Fdisk" drive, it is usually the fifth drive then select 2 and press Enter.



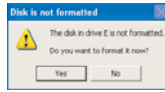
3. After it is switched to the FDISK drive, just press Enter twice, the PC will create partitions automatically.



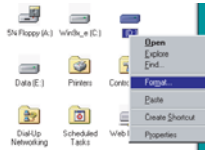
4. After the partitions have been created, just press Esc twice to exit the FDISK drive and exit the MS-DOS mode.



5. Just unplug and re-plug in the Xtreme Files.  
The new drive will show up in My Computer.  
The PC should ask you to format the drive.

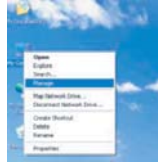


6. If the PC did not ask you to format the drive, just right click on the Xtreme Files to format the hard drive.

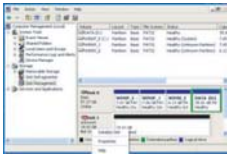


**Under Windows 2000/XP**

1. Right click on My Computer, select Manage to enter Computer Management.



2. Then select Disk Management.



3. Select and click on the Xtreme Files and select Partition. Please select quick format, and format in FAT32 or NTFS mode. Click on Next to continue.



4. It may take a little while to format.





[www.coolmaxusa.com](http://www.coolmaxusa.com)